

Westchester Reform Temple : By Rogers Marvel Architects

 housevariety.blogspot.com/2011/04/westchester-reform-temple-by-rogers.html

[Scarsdale, NY, United States](#)

[Rogers Marvel Architects](#)

Post By: Kitticoon Poopong



Photo © Courtesy of Paul Warchol Photography

Our master plan design for Westchester Reform Temple in Scarsdale, NY includes a new [sanctuary](#) complex, with a new Religious School and Study Center within renovated existing structures on a suburban site. The plan includes extensive re-organization of the site to create a cohesive campus.



Photo © Courtesy of Paul Warchol Photography



Photo © Courtesy of Paul Warchol Photography

The client's objectives included providing new classroom space for their Religious School program, reorganizing spaces to improve functionality, and improving security, safety and accessibility.



Photo © Courtesy of Paul Warchol Photography



Photo © Courtesy of Paul Warchol Photography

The design for the new sanctuary employs economic [building materials](#) and natural light to create a worship space that is both grand and intimate. A visual connection to an exterior garden to the East, behind the [Bimah](#), is a thematic component of the plan. We worked closely with the Temple Clergy to design the sanctuary seating and Bimah to compliment their liturgical style and accommodate different services and life cycle events. Landscape and the development of pedestrian connections are used to enhance the spirit of Place and unify the diverse buildings on the campus.



Photo © Courtesy of Paul Warchol Photography



Photo © Courtesy of Paul Warchol Photography

The East Wall is a window to the Spiritual Garden comprised of glass louvers with mirrored undersides. The wall compiles three views: a subtle view directly to the Garden, revealing the world around us; a reflected, idealized view of the Garden reminding us that we are part of a larger world with many views; and a quiet reflection of the Congregation, helping us see the community in which we worship. All of these views collectively hold the Ark: our people, in this place, hold the Ark and the Torahs.



Photo © Courtesy of Paul Warchol Photography

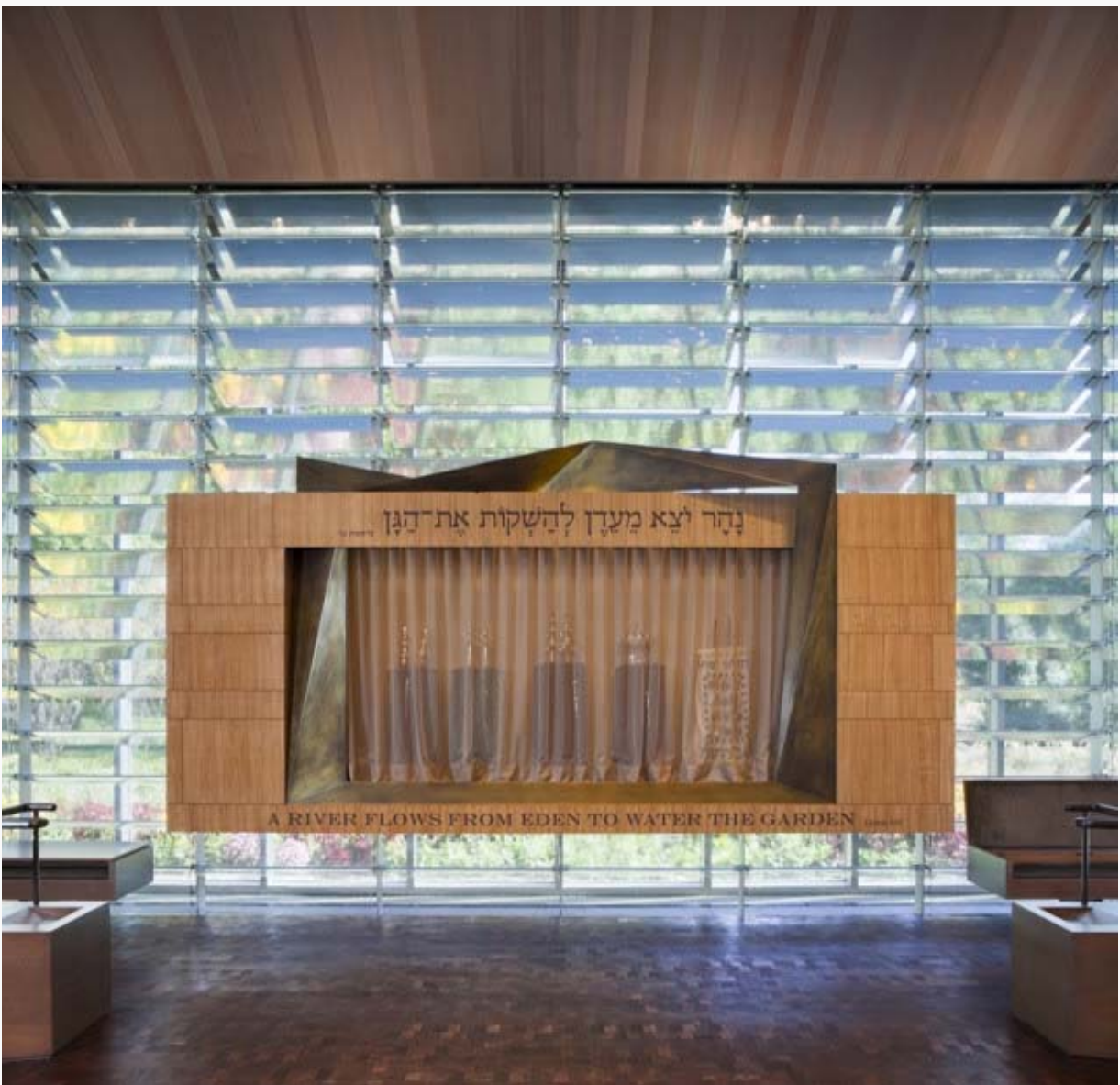


Photo © Courtesy of Paul Warchol Photography

The Sanctuary is comprised of Seven lateral "bands", acknowledging that every day is for prayer and learning, yet

remembering that the Seventh Day is special, Shabbat. The Seventh "band" is special as well. It is the most nearly complete band, it frames the Bimah, and holds the Ark. When the Sanctuary and Social Hall are combined into one worship space, there are Twelve Bands, to remember the original Twelve Tribes of Israel.

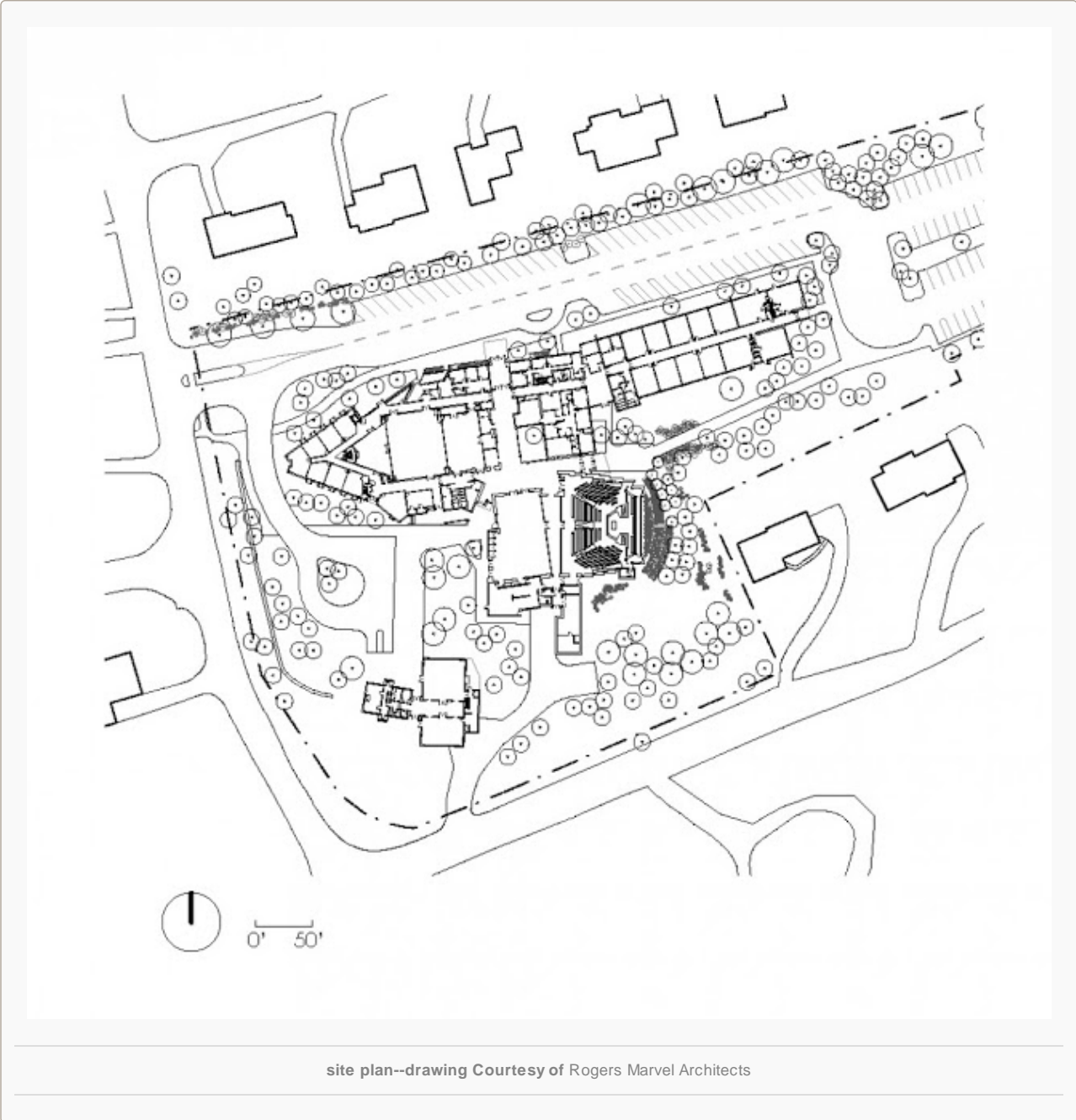


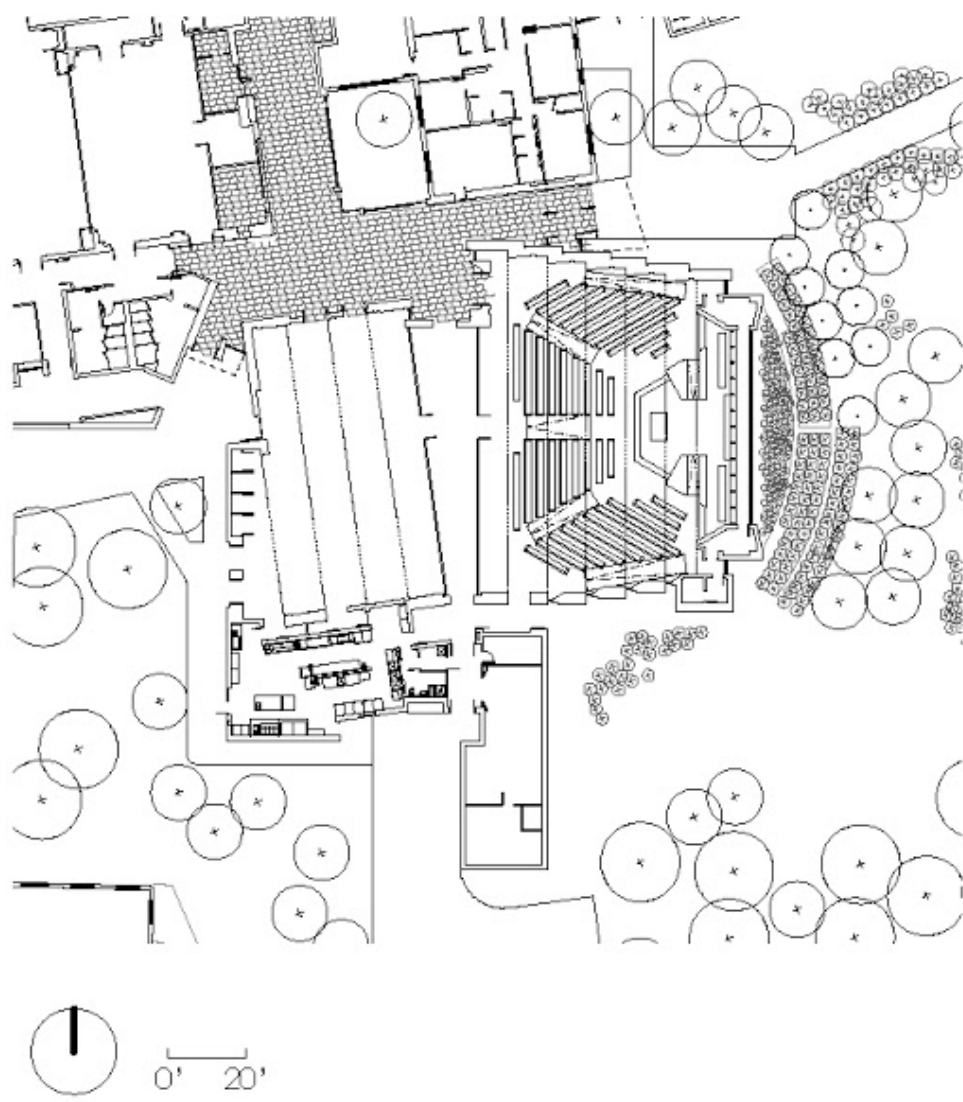
Photo © Courtesy of Paul Warchol Photography



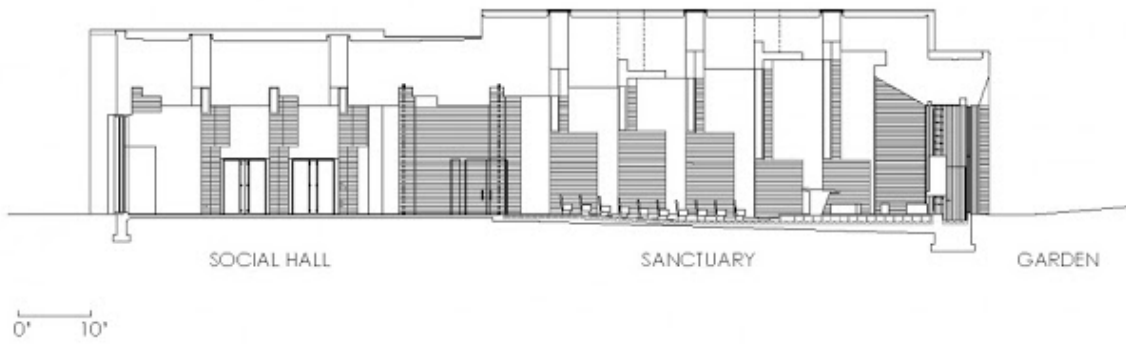
Photo © Courtesy of Paul Warchol Photography

The Ark is a cabinet made of Olive Ash to reference the original Ark carried in the Egyptian desert. The panels are aligned in Sephardic scale, acknowledging that music is part of our worship. A bronze collar lines the Ark opening: it is continuous and mysterious, like Torah, and suggesting study and interpretation. The solar powered Ner Tamid illuminates the top of the bronze collar.

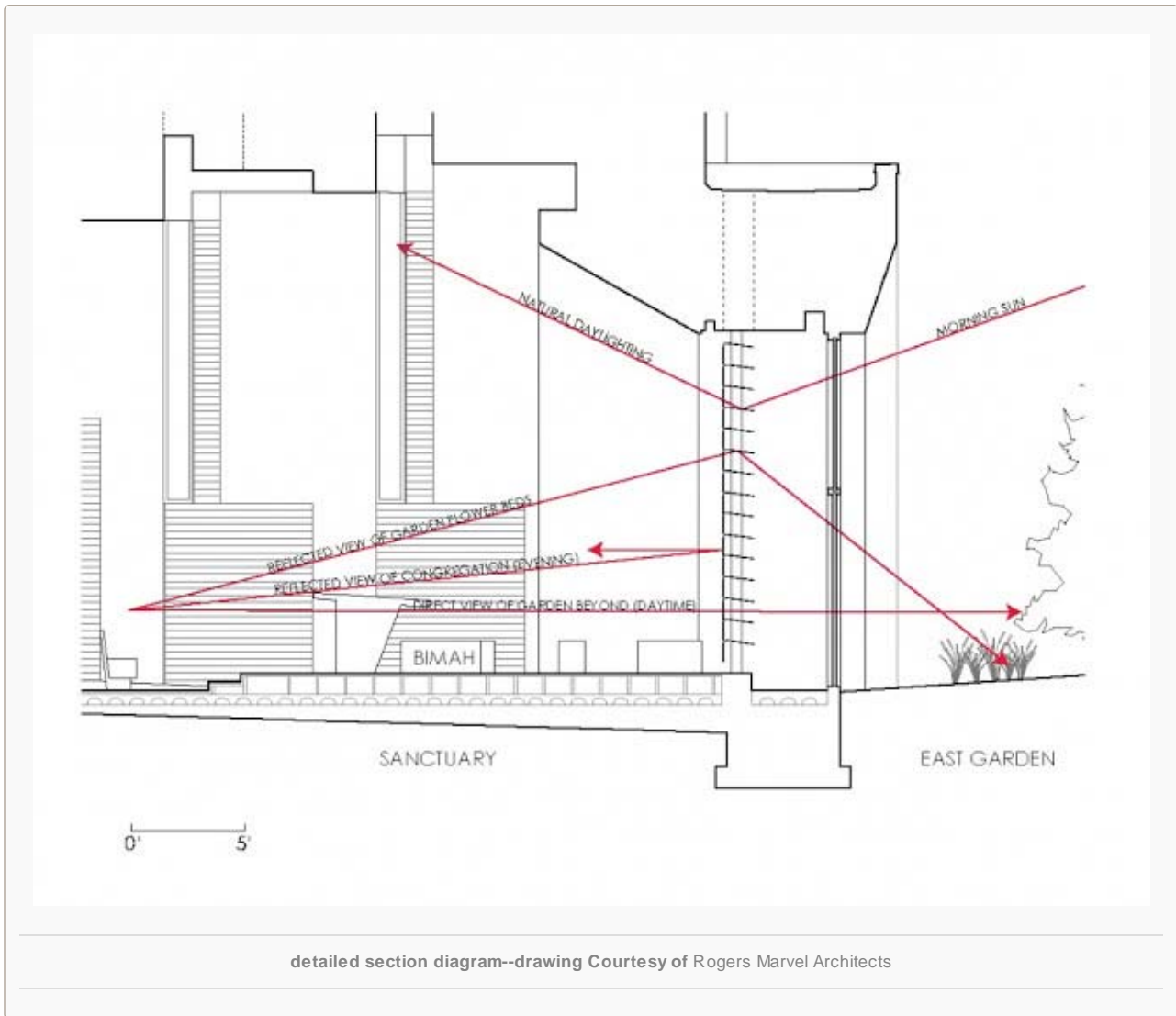




floor plan--drawing Courtesy of Rogers Marvel Architects



section--drawing Courtesy of Rogers Marvel Architects



The people

Architects: [Rogers Marvel Architects](#)

Location: Scarsdale, NY, United States

Client: Westchester Reform Temple

Mechanical Engineer: Collado Engineering

Structural Engineer: Robert Silman Associates, P.C.

Civil Engineer: Langan Engineering and Environmental Design

Landscape Designer: Dirtworks, Inc.

Lighting Designer: Jim Conti Lighting Design

LEED Consultant: Buro Happold Consulting Engineers

NYSERDA Representative: SAIC

Energy Modeling Commissioning: EME Group Consulting Engineers

Contractor: E.W. Howell Co., Inc., Kane Contracting

Cedar Supplier: Woodbury Supply Company, Inc.

Project year: 2009

Photographs: [Paul Warchol Photography](#)

